

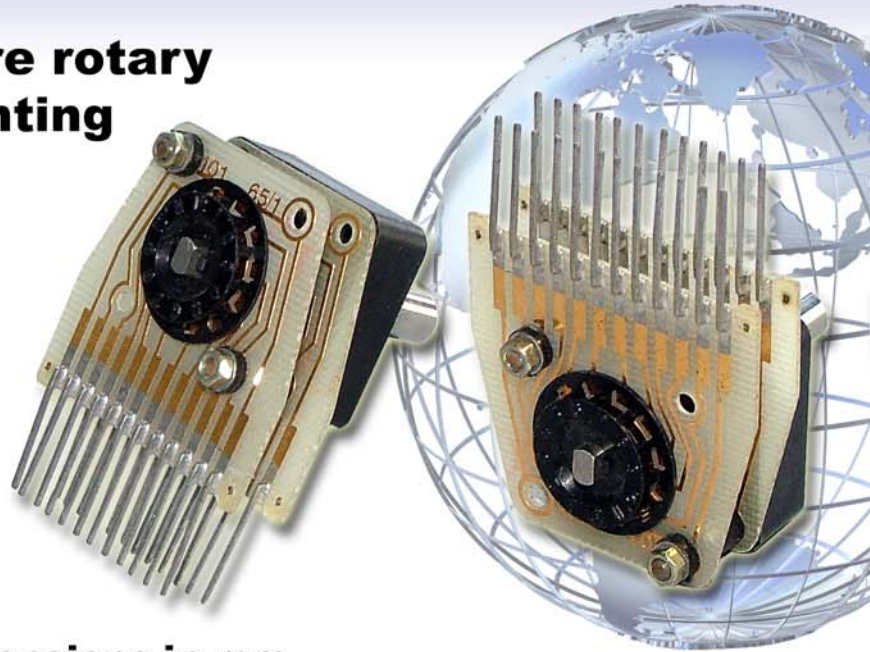
ROTARY SWITCHES

TYPE DS

High quality open structure rotary wafer switch for pcb mounting

FEATURES

- Gold contacts for electrical stability
- Long operational life
- Balanced positive indexing
- 100% electrically tested
- Stainless steel spindles
- Wide operating temperature range
- 12 positions
- Various wafer styles
- Eliminates wiring faults
- Dual concentric assemblies
- Open frame structure



TECHNICAL SPECIFICATION

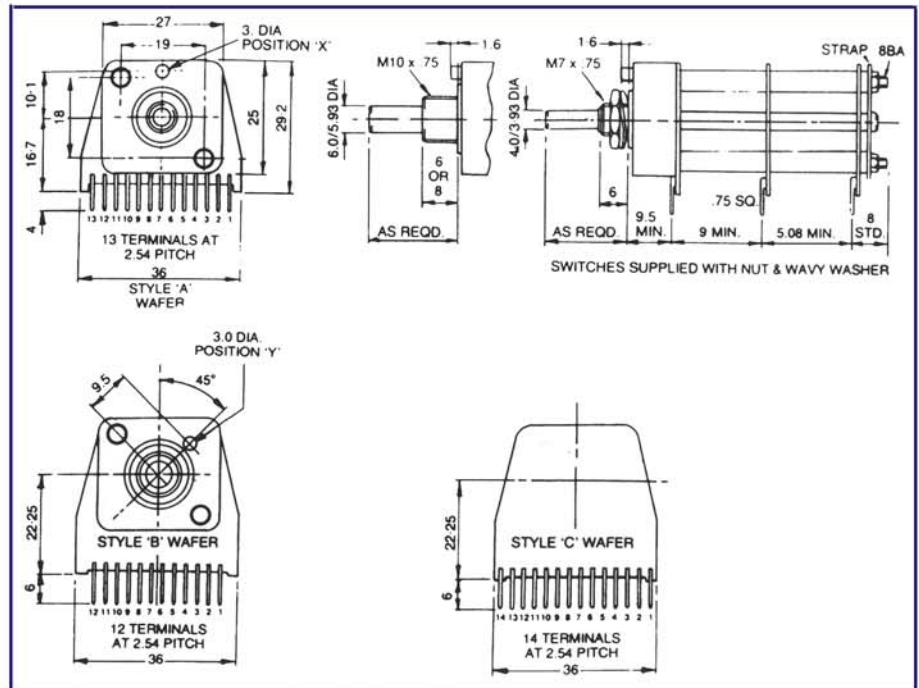
Electrical Specifications

- Contact Rating:- Switching** 5VA dc. 10VA ac. (1A max) resistive
- Continuous** 2A
- Proof Voltage (for 1 min.)** 1000 V peak, adjacent term
- Insulation Resistance** 500M Ω min at 500 volts dc.
- Contact resistance (at terminals)** 60m Ω max initially measured at 100mV, 100mA. after 20,000 cycles max increase from initial value 20m Ω
- Capacitance** 3pf adjacent terminals
- Endurance** 20,000 cycles at upper temp category (70°) & VA rating

Mechanical Specifications

- Temperature Range** -40°C/+70°C
- Contact Finish** Hard acid gold 2 μ m on nickel 5 μ m
- End Stop Strength** 1.13Nm
- Terminal Strength** Tensile test load 10N
- Sealing** Spindle & panel seal option max. leakage 1ml/hour.
- Mounting Bush** Brass tin plated
- Spindle** Stainless steel or steel zinc plated
- Moulded Parts** Glass filled nylon 66
- Endurance** 20,000 cycles
- Wafer** Epoxy glass laminate copper clad etched & electroplated as contact

Dimensions in mm



WAFER STYLE	POLE TERMINAL IDENTIFICATION				STANDARD WAFERS SHORTING & NON-SHORTING
	1 POLE TERM: No.	2 POLE TERM: No.	3 POLE TERM: No.	4 POLE TERM: No.	
A	7	1.8	3, 8, 12	1, 4, 8, 11	1 pole 12 way, 2 pole 5 way
B	12	1.7	1, 5, 9	1, 4, 7, 10	1 pole 11 way, 2 pole 5 way, 3 pole 3 way
C	14	1.8	1, 5, 10	1, 4, 8, 11	1 pole 12 way, 2 pole 6 way

Wessex Advanced Switching Products Ltd
 Alexandria Park, Penner Road Havant,
 Hants PO9 1QY, UK
 Tel: +44 (0)239 245 7000
 Fax: +44 (0) 239 247 3918
 email: sales@wasp-ltd.co.uk
 www.waspswitches.co.uk

