

# ROTARY SWITCHES

## TYPE DH

19.5mm - 12 or 16 position

### FEATURES

- Long operational life
- Gold contacts
- Stainless steel spindles
- Balanced positive indexing
- Fully sealed version available
- Decimal or binary
- 100% electrically tested
- Wide operating temperature range



### TECHNICAL SPECIFICATION

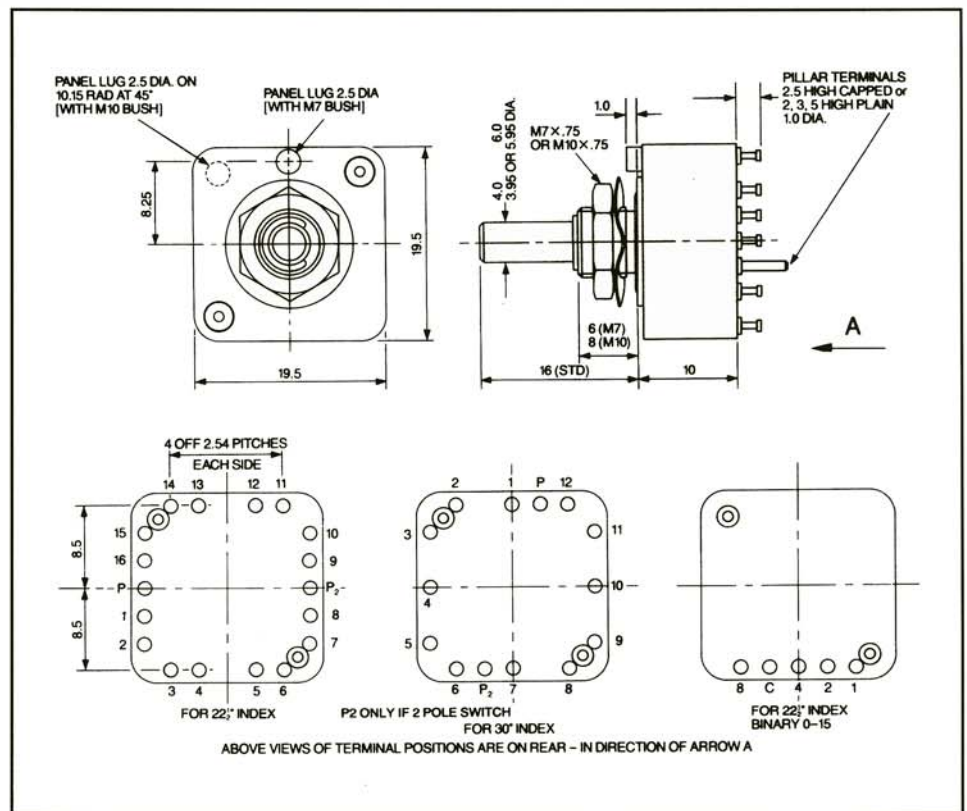
#### Dimensions in mm

#### Electrical Specifications

<b>Contact Rating:- Switching</b>	5VA dc. 10VA ac. (250mA max) resistive
<b>Continuous</b>	2A
<b>Proof Voltage (for 1 min.)</b>	750 V peak, adjacent term
<b>Insulation Resistance</b>	1000M $\Omega$ min at 500 volts dc.
<b>Contact resistance (at terminals)</b>	100m $\Omega$ max initially measured at 100mV, 100mA. after 10,000 cycles max increase from initial value 20m $\Omega$
<b>Capacitance</b>	3pf adjacent terminals
<b>Endurance</b>	10,000 cycles at upper temp category (85°) & VA rating

#### Mechanical Specifications

<b>Temperature Range</b>	-40°C/+85°C
<b>Contact Finish</b>	Gold on nickel
<b>End Stop Strength</b>	0.7Nm
<b>Terminal Strength</b>	Tensile test load 5N
<b>Sealing</b>	Spindle & panel seal option max. leakage 1ml/hour.
<b>Mounting Bush</b>	Brass nickel plated
<b>Spindle</b>	Stainless steel or mild steel nickel plated
<b>Operating Torque</b>	.02/.06 or .06/.12Nm
<b>Index Body</b>	Glass filled nylon 66
<b>Stator</b>	High grade epoxy glass laminate
<b>Endurance</b>	10,000 cycles
<b>Terminals</b>	Brass silver plated



Wessex Advanced Switching Products Ltd  
 Southmoor Lane, Havant, Hants PO9 1JW UK  
 Tel: +44 (0)239 245 3711  
 Fax: +44 (0) 239 247 3918  
 email: sales@wasp-ltd.co.uk  
 www.waspswitches.co.uk

