

ROTARY SWITCHES

TYPE DG

24 position rotary wafer switches

FEATURES

- Gold contacts for electrical stability
- Long operational life
- Balanced positive indexing
- 100% electrically tested
- Stainless steel spindles
- Wide operating temperature range
- 24 positions
- Multi wafer
- Dual concentric

TECHNICAL SPECIFICATION

Electrical Specifications

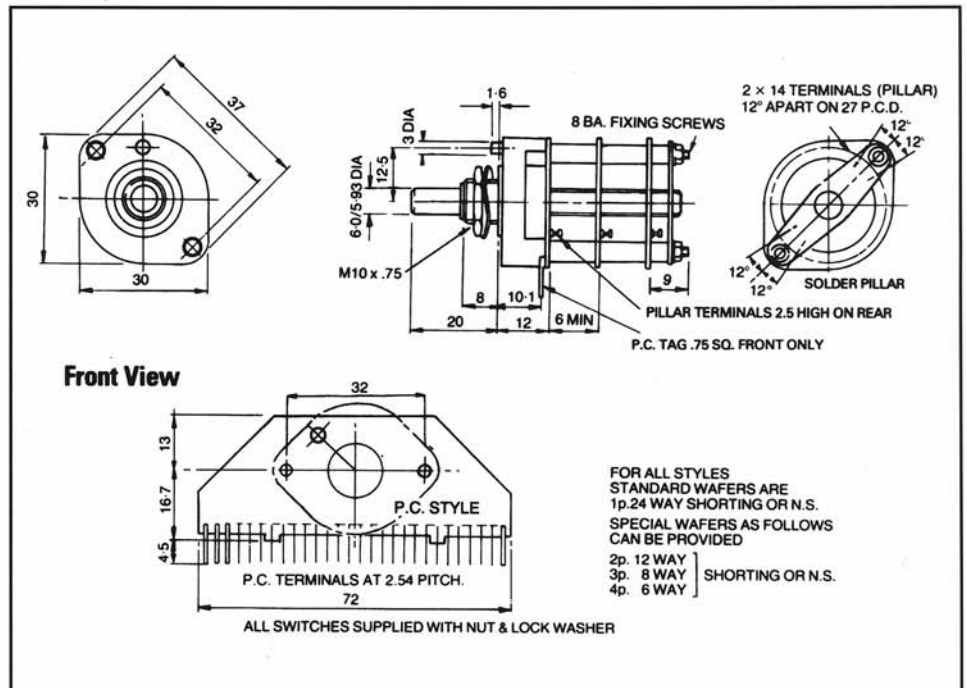
Contact Rating:- Switching	5VA dc. 10VA ac. (1A max) resistive
Continuous	2A
Proof Voltage (for 1 min.)	1000 V peak, adjacent term
Insulation Resistance	500M Ω min at 500 volts dc.
Contact resistance (at terminals)	60m Ω max initially measured at 100mV, 100mA. after 20,000 cycles max increase from initial value 20m Ω
Capacitance	3pf adjacent terminals
Endurance	20,000 cycles at upper temp category (85°) & VA rating

Mechanical Specifications

Temperature Range	-40°C/+85°C
Contact Finish	Hard acid gold 2 μ m on nickel 5 μ m
End Stop Strength	1.13Nm
Terminal Strength	Tensile test load 10N
Sealing	Spindle & panel seal option max. leakage 1ml/hour.
Mounting Bush	Brass electroplated
Spindle	Stainless steel or zinc plated
Moulded Parts	Glass filled nylon 66
Endurance	50,000 cycles
Wafer	Epoxy glass laminate copper clad etched & electroplated as contact
Terminals	PC - brass tin lead Pillar - brass silver plated



Dimensions in mm



Wessex Advanced Switching Products Ltd
 Alexandria Park, Penner Road Havant,
 Hants PO9 1QY, UK
 Tel: +44 (0)239 245 7000
 Fax: +44 (0) 239 247 3918
 email: sales@wasp-ltd.co.uk
 www.waspswitches.co.uk

